



# Electrolux

## Instruction Book/说明书/説明手冊/ 사용설명서/Buku Petunjuk/ คู่มือการใช้งาน/Sách hướng dẫn

### Pure C9

Bagless canister vacuum cleaner/

无袋式真空吸尘器/

集塵盒臥式插電吸塵器/

유선 진공 청소기/

Penyedot debu tanpa kantong penampung/

เครื่องดูดฝุ่นแบบกล่องเก็บฝุ่น/

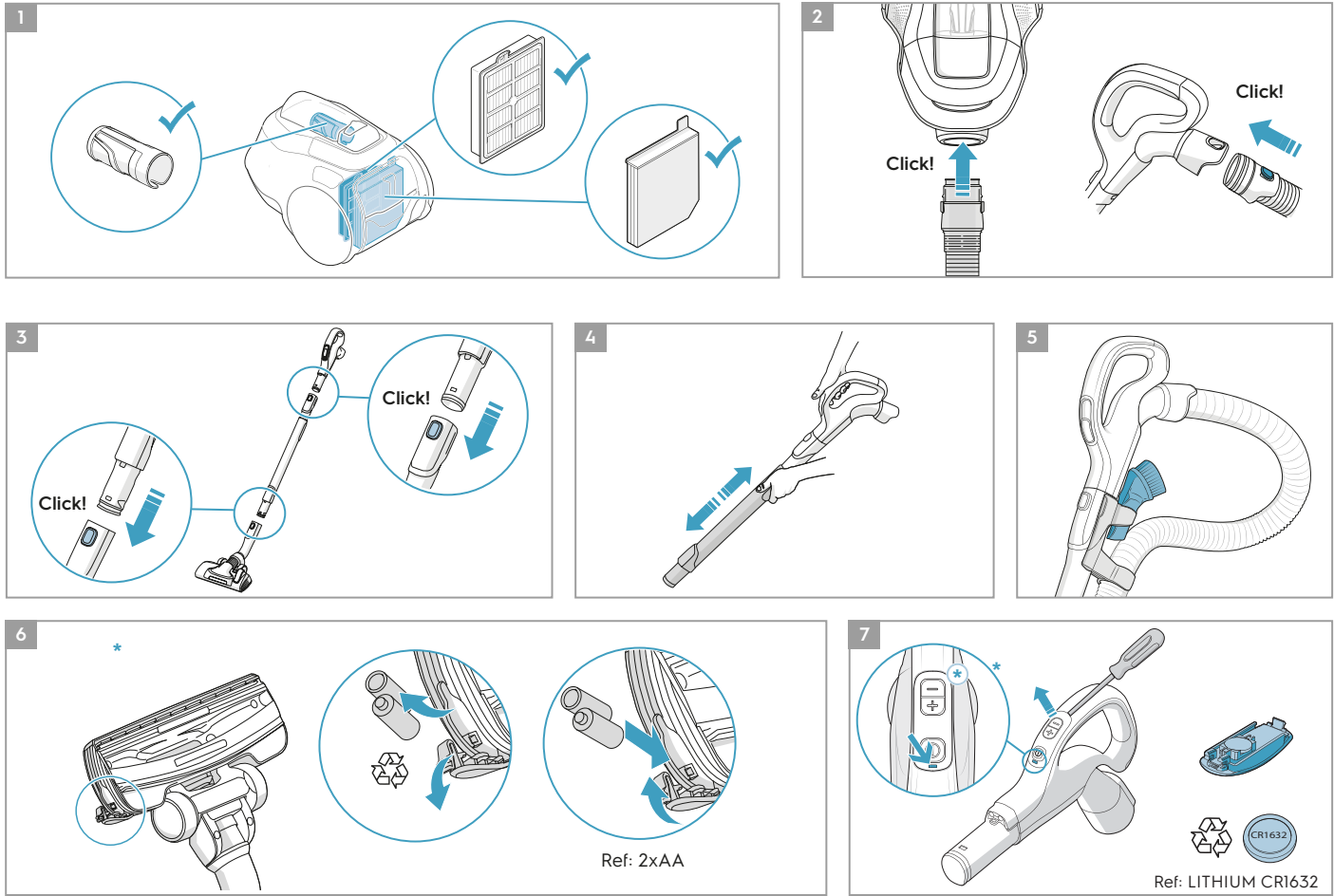
Máy hút bụi dạng hộp không túi

GB	INSTRUCTION BOOK .....	2
SC	说明书 .....	10
CT	説明手冊 .....	18
KO	사용설명서 .....	26
BI	BUKU PETUNJUK .....	34
TH	คู่มือการใช้งาน .....	42
VN	SÁCH HƯỚNG DẪN .....	50

## 1

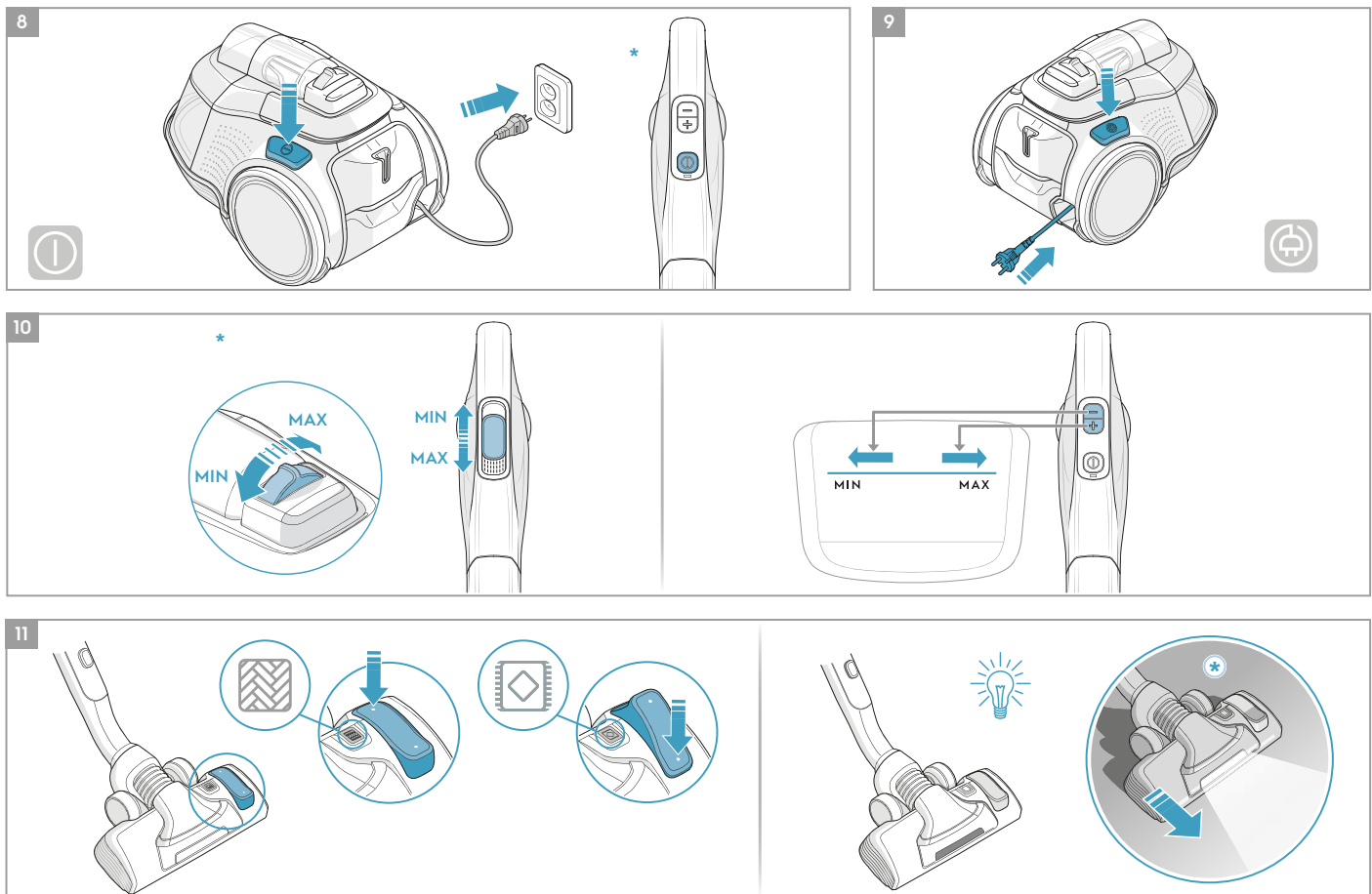


## 2 INSTALLATION



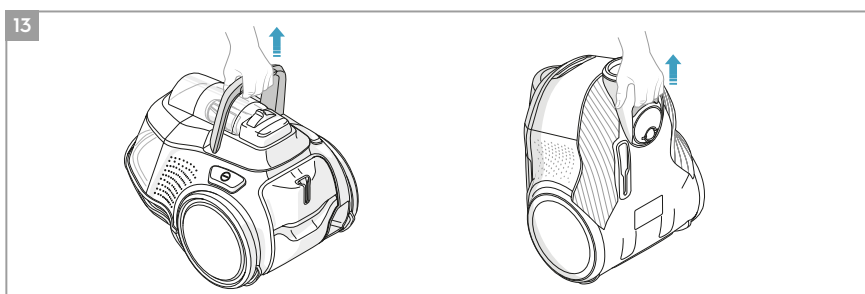
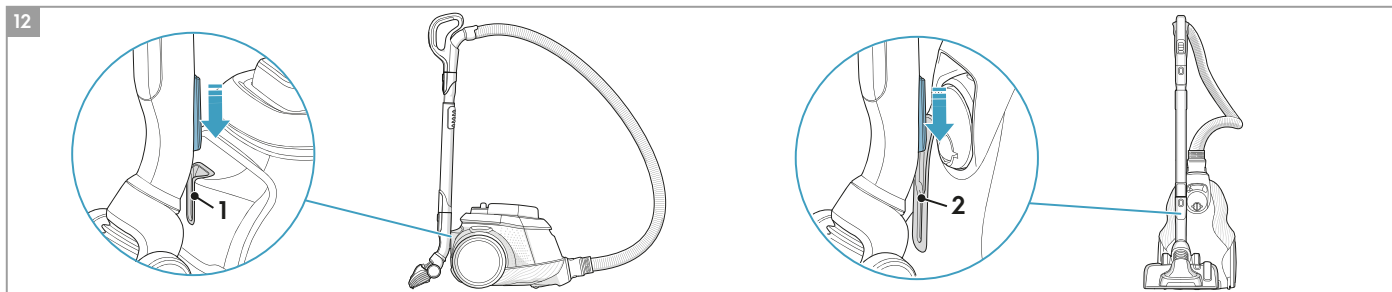
## 3 USING THE PRODUCT

\* CERTAIN MODELS ONLY

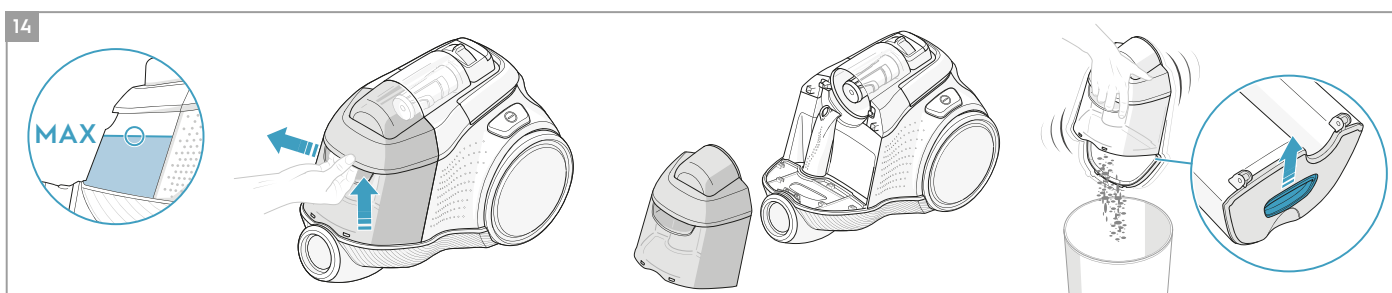


### 3 USING THE PRODUCT

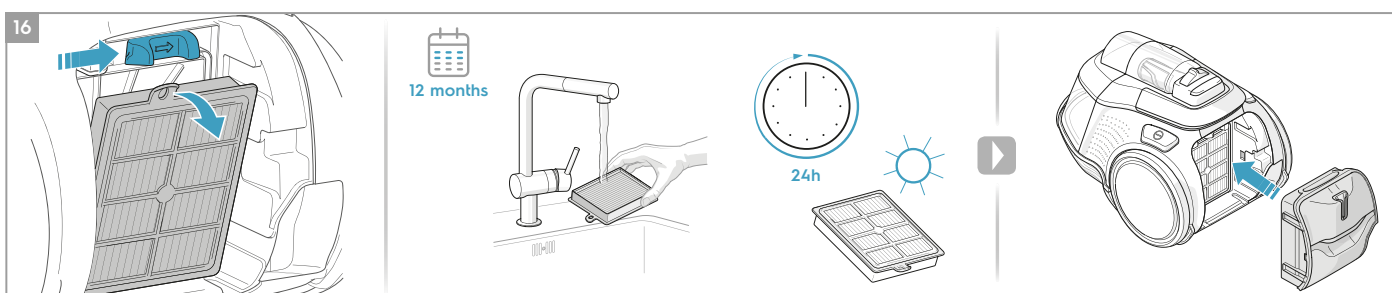
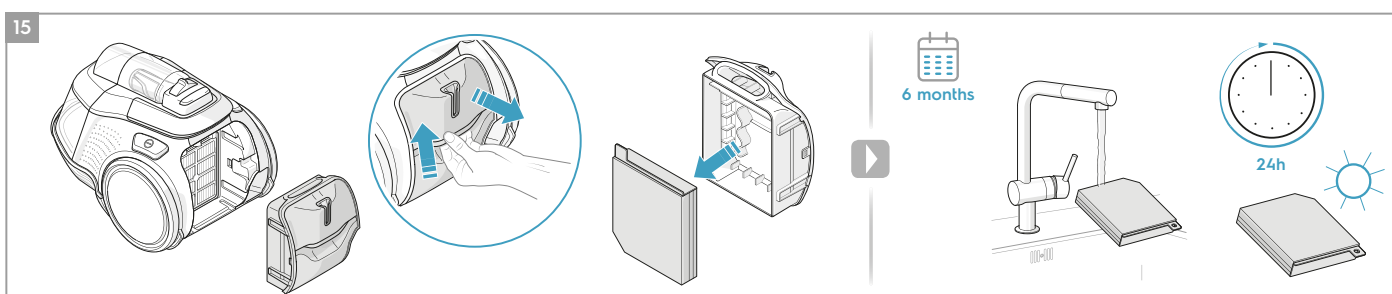
\* CERTAIN MODELS ONLY



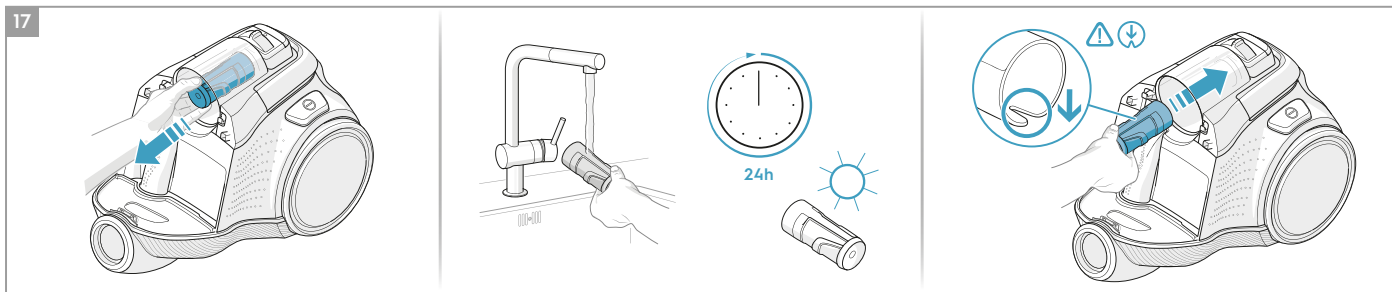
### 4 DUST EMPTYING



### 5 CLEANING THE FILTERS

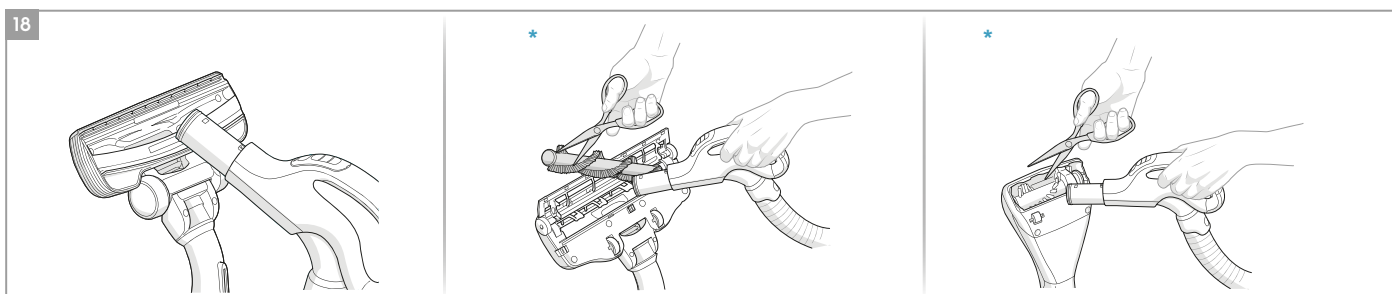


## 5 CLEANING THE FILTERS

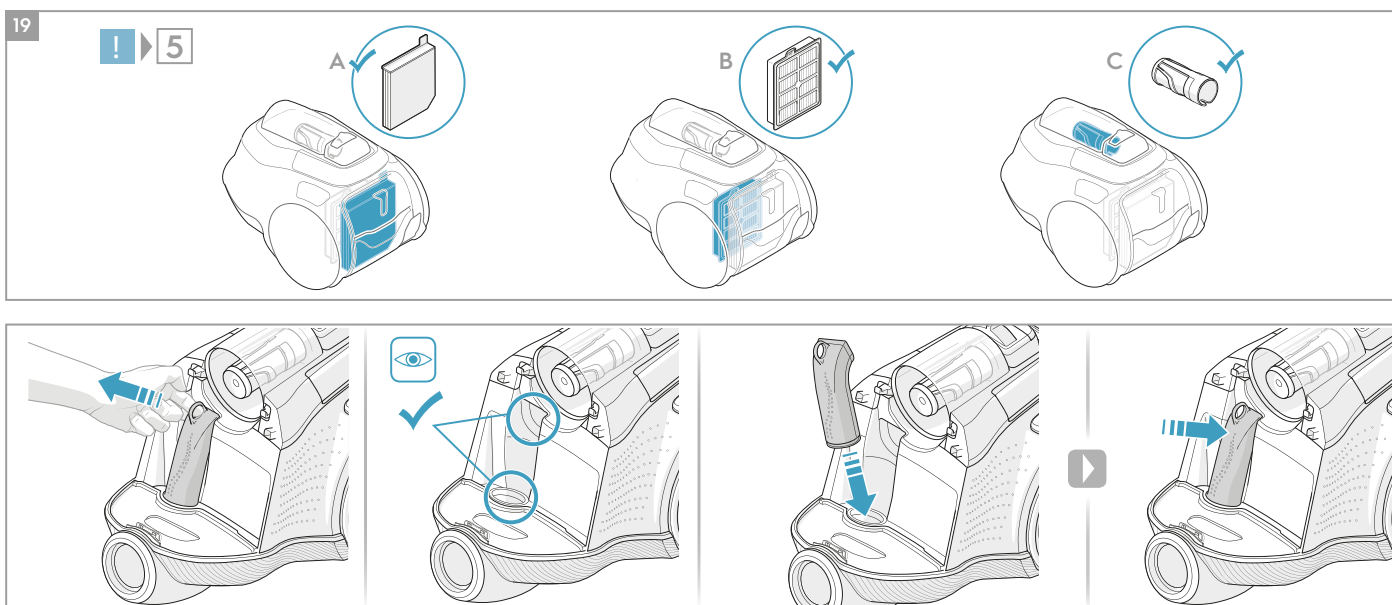


## 6 MAINTENENCE

\* CERTAIN MODELS ONLY



## 7 SYSTEM CHECK



## SAFETY PRECAUTIONS

This appliance can be used by children aged from 8 years and above and persons with reduced physical, sensory or mental capabilities or lack of experience and knowledge if they have been given supervision or instruction concerning use of the appliance in a safe way and understand the hazards involved.

Children should be supervised to ensure that they do not play with the appliance.

Cleaning and maintenance shall not be done by children without supervision.

**WARNING:** Turbo nozzles\* have a rotating brush where parts can get entrapped. Please use them with caution and only on intended surfaces. Please turn the vacuum cleaner off before removing entrapped parts or cleaning the brush.

Batteries must be removed from the remote control in the handle\* / LED lighted nozzle\* before scrapping the product\*\*.

*\*Certain models only.*

*\*\*Information on how to remove the battery is in section 6 and 7.*

Always disconnect the plug from the mains before cleaning or maintaining the appliance or when removing the battery. The battery is to be disposed of safely.

If the cord is damaged, it must be replaced only by an authorized Electrolux service centre in order to avoid a hazard.

**Pure C9** should only be used for normal vacuuming indoors and in a domestic environment. Make sure the vacuum cleaner is stored in a dry place.  
All service or repairs must be carried out by an authorized Electrolux service centre.  
Packaging material, e.g. plastic bags should not be accessible to children to avoid suffocation.

### Never use the vacuum cleaner:

In wet areas.  
Close to flammable gases, etc.  
When the product shows visible signs of damage.  
On sharp objects or fluids.  
When the floor nozzle shows visible signs of a damages.  
On hot or cold cinders, lighted cigarette butts, etc.  
On fine dust, for instance from plaster, concrete, flour, hot or cold ashes.  
Do not leave the vacuum cleaner in direct sunlight.  
Avoid exposing the vacuum cleaner to strong heat or freezing temperatures.  
Never use the vacuum cleaner without its filters.  
Do not try to touch the brush roll while the cleaner is switched on and the brush roll is turning.  
When the wheels are blocked.  
Do not use your vacuum cleaner if the filters are damaged or broken.

### Power cord precautions

Check the plug and cord regularly. Never use the vacuum cleaner if the plug or cord is damaged.

Damage to the vacuum cleaner's cord is not covered by the warranty.  
Never pull or lift the vacuum cleaner by the cord.

Using the vacuum cleaner in the above circumstances may cause serious personal injury or damage to the product. Such injury or damage is not covered by the warranty or by Electrolux.

## SERVICING AND WARRANTY

All service or repairs must be carried out by an authorized Electrolux service centre.  
Damage to the vacuum cleaner's cord is not covered by the warranty.  
Damage to the motor caused by; vacuuming liquid, immersing appliance in liquid or using appliance with a damaged hose and nozzle is not covered by the warranty.

## DISPOSAL



This symbol on the product indicates that this product contains a battery which shall not be disposed with normal household waste.



This symbol on the product or on its packaging indicates that the product may not be treated as household waste.

To recycle your product, please take it to an official collection point or to an Electrolux service center that can remove and recycle the battery and electric parts in a safe and professional way. Follow your country's rules for the separate collection of electrical products and rechargeable batteries.

Hereby, Electrolux Home Care and SDA, declares that the Vacuum Cleaner with radio equipment type FOR1, FOR2 and FOR3 is in compliance with Directive 2014/53/EU.



## ENGLISH

Thank you for choosing Electrolux Pure C9 vacuum cleaner. Always use original accessories and spare parts to get the best results. This product is designed with the environment in mind. All plastic parts are marked for recycling purposes.

### BEFORE STARTING

- Read this manual carefully.
- Check that all parts described are included.
- Pay special attention to the safety precautions!

### DESCRIPTION OF PURE C9 VACUUM CLEANER

A. Display	<b>Nozzle Accessories</b>
A1 rotary knob control*	K. AeroPro 3in1 tool
A2 remote control*	T. Motorized nozzle*
B. Filters lid	U. FlowMotion nozzle*
C. Fine dust filter	V. FlowMotion LED nozzle (with front lights)*
D. Pre-motor filter	W. AeroPro Turbo nozzle*
E. Parking slots	X. AeroPro Mini Turbo nozzle*
F. Power cord	Y. ParkettoPro nozzle*
G. Carry handle	Z. AeroPro FlexProPlus nozzle*
H. Cyclone compartment and nose cone filter	AA. AeroPro Long crevice nozzle*
I. Air channel	AB. BedPro nozzle*
J. Dust compartment	
L. AeroPro hose	
M. AeroPro handle	
M1 AeroPro Classic handle*	* Selected models only
M2 AeroPro Ergo handle*	
M3 AeroPro Remote Control handle*	
N. AeroPro telescopic tube	
O. Parking clip	

Picture page 2-6

### HOW TO USE THE VACUUM CLEANER

- 1 Check that all filters are properly placed before using the vacuum cleaner.
- 2 Insert the hose into the cleaner (to remove it, press the lock buttons and pull). Insert the hose into the hose handle until the lock button clicks (to release it, press the lock button and pull).
- 3 Attach the telescopic tube to the nozzle. Attach the telescopic tube to the hose handle (to remove it, press the lock button and pull).
- 4 Adjust the telescopic tube by holding the lock with one hand and pulling the handle with the other hand.

### 3IN1 ACCESSORY TOOL

- 5 You can fasten the clip-on holder and 3in1 tool under the handle to have it easily accessible. The tool has 3 functions, see pictures on next page.

### CHANGING THE BATTERIES\*

- 6 Nozzle with front lights\*: Before first use, remove the protective film (on top of the batteries). Change batteries when front lights start blinking fast. Use 2 AA batteries.
- 7 Handle with remote control\*: Change battery when light indicator turns red or is not responding when pressing any button. Use only batteries type LITHIUM CR1632.

**NB:** Remove the batteries from the product before scrapping. Follow your country's rules for collection of batteries and electrical products.

### START/STOP THE VACUUM CLEANER AND ADJUST SUCTION POWER

- 8 Pull out the power cord and plug it into the mains. Press the ON/OFF button to turn the cleaner on/off. Models with remote control can also be operated by the ON/OFF button on the handle.\*
- 9 After cleaning, push the REWIND button to rewind the cable.
- 10 **Adjust suction power (manual control models):** Turn the rotary knob on the cleaner or use the air valve on the handle.\*  
**Adjust suction power (remote control models):** Press +/- button on the handle. MIN/MAX and symbols indicators on display will show level of power.\*

### VACUUMING WITH THE UNIVERSAL NOZZLE (V\*, W\*)

- 11 Change nozzle setting with the pedal. Icon illustrates recommended floor type (hard floor or carpet).

FlowMotion LED nozzle\*: Move the nozzle forward. The front light turns on automatically after a few seconds. When the nozzle is not used, the light turns off automatically after a few seconds.

### PARKING POSITIONS, MOVING THE VACUUM CLEANER

- 12 Use parking position (1), at the back of the vacuum cleaner, when you pause while vacuuming.  
Use parking position (2), underneath the vacuum cleaner, to carry and store the vacuum cleaner.
- 13 The vacuum cleaner has two carrying handles.

### EMPTYING THE DUST COMPARTMENT

- 14 Empty the dust compartment when the level of dust has reached the maximum limit ("MAX"-mark).  
Press the release button and pull to remove the dust compartment. Hold the dust compartment over a dust bin. Press the unlock button underneath the lid, open the lid by swinging it outwards. Empty dust into the dustbin. Refit in reverse order.

### REPLACING THE FILTERS

- 15 Pull the FILTER button to open the filter lid.  
Clean the fine dust filter after six months of use, or when dust is visible. Pull the tab on the frame to remove the fine dust filter. Rinse the filter under running water.  
**NB:** Do not use cleaning agents. Let the filter dry completely (min. 24 h in room temperature) before putting back !
- 16 Press and slide the lock mechanism to the right to release the pre-motor filter. Remove the filter by pulling the filter frame tab. Clean the pre-motor filter after twelve months of use.  
Only use original s-filter Recommended by Electrolux (See Consumables and Accessories). Rinse the inside (dirty side) in lukewarm tap water. Tap the filter frame to remove the water. Repeat the process four times.  
**NB:** Do not use cleaning agents. Avoid touching the filter surface. Let the filter dry completely (min. 24 h in room temperature) before putting back ! Change the washable filter at least once a year or when it is very dirty or damaged.  
After replacing the filters, close the filter lid until it is clicked back into place.
- 17 **Cleaning the nose cone filter:** the nose cone filter is located inside the cyclone compartment. Clean the nose cone filter if dust has entered. Pull the nose cone filter to remove. Remove dust with your hand. Clean under running water if heavily soiled. Refit in reverse order.  
**NB:** Do not use cleaning agents. Let the filter dry completely (min. 24 h in room temperature) before putting back!


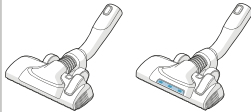




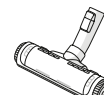
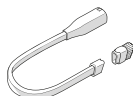

### CLEANING THE UNIVERSAL NOZZLE (V\*, W\*\*) AND THE TURBO NOZZLE (X\*)

- 18 Disconnect the universal nozzle from the tube. Clean with the hose handle.  
Disconnect the turbo nozzle from the tube and remove entangled threads etc by snipping them away with scissors. Use the hose handle to clean the nozzle. \*

### Enjoy a great cleaning experience with Pure C9!

Electrolux reserves the right to change products, information and specifications without notice.

## TIPS ON HOW TO GET THE BEST RESULTS

NOZZLE/ACCESSORY	USE FOR:	NOZZLE/ACCESSORY	USE FOR:
<b>T. Motorized nozzle*</b> 	<b>Carpet nozzle:</b> - Motorized nozzle gives the best dust pick-up and deep cleaning of carpets through the rotating brush roller agitating the carpet. - Do not leave the motorized nozzle stationary with brush roller on.	<b>U. FlowMotion nozzle*</b> <b>V. FlowMotion LED nozzle*</b> 	<b>Universal nozzle:</b> - For all floor types, secures best dust pick up on both carpets and hard floors. - Change nozzle setting with the pedal. Icon will show recommended floor type. - Front light helps to detect dust and dirt in dark spaces (under furniture etc). <i>PureVision only</i>
		<b>X. Mini Turbo nozzle*</b> 	<b>Upholstery nozzle:</b> - Brushes and vacuums at the same time (best pick up of hair, fibres etc). - For textile furniture, car seats, mattresses etc. - Brush roller is driven by the airflow of the vacuum cleaner. - Not suitable for carpets with very deep pile and long fringes as it can get stuck in the rotating brush roll.
<b>W. Turbo nozzle*</b> 	<b>Carpet nozzle:</b> - Brushes and vacuums at the same time (best pick up of hair, fibres etc). - Brush roller is driven by the airflow of the vacuum cleaner. - Not suitable for carpets with very deep piles and long fringes, anti-slip carpets like door mats or water resistant carpets. Use universal nozzle instead.	<b>Z. FlexProPlus nozzle*</b> 	<b>Hardfloor nozzle:</b> - For reach under/between furniture, corners and other obstacles. - Can easily turn 180 degrees for direct access to narrow spaces.
<b>Y. ParkettoPro nozzle*</b> 	<b>Hard floor nozzle:</b> - For gentle cleaning of hard floor (parquet, wooden floor, tiles etc). - Best dust pick up on hard floor with crevice.	<b>AB. BedPro nozzle*</b> 	<b>Bed nozzle:</b> - Removes dirt and dust mites from bedding and mattresses.
<b>AA. Long crevice nozzle*</b> 	<b>Extra long tool:</b> - For areas hard to reach (top of shelves etc). - For narrow spaces (behind radiators, under car seats etc).	<b>K. 3in1 accessory tool*</b>  <div> <b>3 tools in 1:</b>            1. Dusting tool for hard surfaces (bookshelves, skirting boards etc).            2. Upholstery tool for textiles (curtains, upholstery etc).            3. Crevice tool for narrow spaces (behind radiators etc).         </div>	
<b>Models with manual power regulation</b> – follow graphics on cleaner for optimal performance.			

## TROUBLESHOOTING

PROBLEM	SOLUTION
The vacuum cleaner does not start	<ul style="list-style-type: none"> <li>• Check that the cable is connected to the mains.</li> <li>• Check that the plug and cable are not damaged.</li> <li>• Check for a blown fuse.</li> <li>• Check if the battery indicator lamp in the remote control handle responds (certain models only).</li> </ul>
The cleaner stops	The cleaner might be overheated: disconnect it from the mains; check if the nozzle, tube, hose or filters are blocked. Let the cleaner cool down for 120 minutes before plugging it in again. If the cleaner still does not work, contact an authorized Electrolux service centre.
Reduction of suction capacity versus normal	<ul style="list-style-type: none"> <li>• Check if the dust compartment is full or blocked.</li> <li>• Check if the air channel and inlet or outlet connection is blocked and needs to be cleared.</li> <li>• Check if the pre-motor filter is clogged and needs changing.</li> <li>• Check if nozzle is blocked and needs to be cleared.</li> <li>• Check if hose is blocked by squeezing it gently. However, be careful in case the obstruction has been caused by glass or needles caught inside the hose.</li> </ul> Note: The warranty does not cover any damage to the hose caused by cleaning it.
Water has been sucked into the vacuum cleaner	It will be necessary to replace the motor at an authorized Electrolux service centre. Damage to the motor caused by the penetration of water is not covered by the warranty.
<b>For any further problems, contact an authorized Electrolux service centre.</b>	



## CONSUMABLES & ACCESSORIES



Buy Consumables & Accessories  
for your appliance:

[www.electroluxshop.co.kr](http://www.electroluxshop.co.kr)

<https://shop.electrolux.com.au/>

Availability of Consumables & Accessories varies by region and country.

Please refer to our local Electrolux website for more details or contact local customer service hotline for support.

### S-FILTER



PureAdvantage D11 Washable  
(Australia, New Zealand)

HEPA 13 washable

### S-FRESH



Crispy Bamboo  
Tropical Breeze  
Brown Sugar & Fig  
Evening Rose  
Citrus Burst

### NOZZLE\*



Silent Parketto



DustMagnet Silent

### KITS



Delicate Care KIT



Clean & Tidy KIT

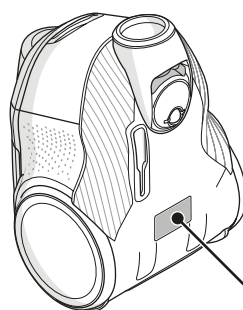
\* Availability of accessory is dependent on tube dimension

## CUSTOMER CARE AND SERVICE

When contacting Service, ensure that you have  
the following data available:

- Model Number
- PNC number
- Serial number

The information can be found on the rating plate.



Model Number	PNC Number	Serial Number																					
<table border="1"> <tr> <td colspan="2"><b>Electrolux</b></td> <td>Type FNA</td> </tr> <tr> <td>Model Code TBD</td> <td>PNC 910287894</td> <td>Elc 00</td> </tr> <tr> <td colspan="2"></td> <td>Serial Number 12345678</td> </tr> <tr> <td colspan="2"> </td> <td>230 V 50 Hz</td> </tr> <tr> <td colspan="2"></td> <td>550 W NOM</td> </tr> <tr> <td colspan="2"></td> <td>Made in EU</td> </tr> <tr> <td colspan="3"> <small>Electrolux Appliances AB S-1 Garansgatan 143 SE-105 45 Stockholm, Sweden</small> </td> </tr> </table>			<b>Electrolux</b>		Type FNA	Model Code TBD	PNC 910287894	Elc 00			Serial Number 12345678			230 V 50 Hz			550 W NOM			Made in EU	<small>Electrolux Appliances AB S-1 Garansgatan 143 SE-105 45 Stockholm, Sweden</small>		
<b>Electrolux</b>		Type FNA																					
Model Code TBD	PNC 910287894	Elc 00																					
		Serial Number 12345678																					
		230 V 50 Hz																					
		550 W NOM																					
		Made in EU																					
<small>Electrolux Appliances AB S-1 Garansgatan 143 SE-105 45 Stockholm, Sweden</small>																							

### VISIT OUR WEBSITE TO:



Get usage advice, brochures,  
trouble shooter, service information:  
[www.electrolux.com](http://www.electrolux.com)